



Philadelphia Area Consortium of Special Collections Libraries

“Consorting with the Future: Issues and Opportunities for Consortia of Academic, Research, and Special Collections Libraries”

December 3, 2003
Philadelphia, PA

“Who else knows we’re special?”

James Michalko, President
RLG



Where museums, libraries, and archives intersect

RLG Archival Resources

Bringing the World's Archives to the Desktop

- Unknown resources from hundreds of archives and other collections of primary sources
 - 39,084 finding aids for archival collections
 - 735,725 catalog records describing special collections
- Full-text searching and display
- Providing a single point of entry to worldwide archival holdings.



Export



Notebook



Feedback



Help



Visit RLG

BACK

SIMPLE
SEARCHADVANCED
SEARCH

OPTIONS

CHANGE
FILES

EXIT

SEND

Your search for **this phrase: railroad bridges** has retrieved these collection descriptions

▲ ▼ Go to page: 1 2 3

149 [Bibliographic Records](#) (click to view these)

21 Finding Aids (listed below)

1. [A Guide to the Photographs of Historic Sites in Charlottesville, Va. 1935-1998](#)
Special Collections, University of Virginia Library
150 photos: b&w.
[Collection scope / Abstract](#)
2. [Panama Canal Photograph Collection](#)
Web site provided by Wichita State University Special Collections and University Archives
3. [A Guide to the Morton Hawes Civil War Letters 1861-1862](#)
Special Collections, University of Virginia Library
This collection consists of twenty-one Civil War letters
[Collection scope / Abstract](#)
4. [Finding Aid to the T.Y. Lin Papers, 1932-1998](#)
The Bancroft Library
Berkeley, California 94720-6000
Number of containers: 6 cartons, 1 box and 15 oversize folders. Linear Feet: approximately 7.9
[Collection scope / Abstract](#)
5. [Inventory of Views from Mexico \[graphic\], ca. 1890](#)
The Bancroft Library
Berkeley, California 94720-6000
Number of items: 11 photographic prints

Matches

— Descriptive
Summary

- Title
- Collection number
- Creator
- Extent
- Repository
- Abstract

— Administrative
Information

- Access
- Publication Rights
- Preferred Citation
- Provenance

Biography

Scope and Content
of Collection

— Collection Contents 1

PERSONAL, 1937-1998

WRITINGS, 1932-1997

— PROFESSIONAL,
1957-1998

+ T.Y. LIN
INTERNATIONAL,
1957-1998

SEARCH THIS GUIDE

railroad bridges

Finding Aid to the T.Y. Lin Papers, 1932-1998

Collection number: BANC MSS 99/308cz

The Bancroft Library



**University of California, Berkeley
Berkeley, California**

Contact Information:

The Bancroft Library.
University of California, Berkeley
Berkeley, California, 94720-6000
Phone: (510) 642-6481
Fax: (510) 642-7589
Email: bancref@library.berkeley.edu



Matches

- Descriptive
Summary

Title
Collection number
Creator
Extent
Repository
Abstract

- Administrative
Information

Access
Publication Rights
Preferred Citation
Provenance

Biography

Scope and Content
of Collection

- Collection Contents 1

PERSONAL, 1937-
1998

WRITINGS, 1932-
1997

- PROFESSIONAL,
1957-1998

+ T.Y. LIN
INTERNATIONAL,
1957-1998

[SEARCH THIS GUIDE](#)[railroad bridges](#)

Biography

T.Y. (Tung Yen) Lin (b. Fuzhou, China November 14, 1911), is professor emeritus at University of California, Berkeley and an eminent and pioneering engineer in the arena of prestressed concrete and in the design and construction of long-span bridges.

Although Lin was interested in studying philosophy and letters, his father was successful in steering him towards a career in engineering. After earning his Bachelors degree in Civil Engineering at Chiao Tung University in Tangshan, China (1931), Lin completed his Masters degree at Berkeley in 1933. From 1933 to 1945, he served as Chief Design Engineer and Chief Bridge Engineer of Chinese Railways and completed over 1000 bridges in rugged, mountainous regions of China. In 1941, he married Margaret Kao and the two came back to California in 1946 at the invitation of University of California, Berkeley, where he assumed a position as professor of civil engineering. A popular lecturer, he was known for his ability to teach engineering both at the conceptual and the detail level. He held chairmanships of the Structural Engineering Division and the campus-wide Board of Education Development and served as director of the Structural Engineering Laboratory at Berkeley. His excellence as a professor and administrator earned him the Berkeley Citation, status as a Berkeley Fellow, and, in 1994, Alumni of the Year, the highest honor of the California Alumni Association.

Lin founded TY Lin International, a consulting engineering firm that employs over 500 people in more than 5 countries, in 1954. Upon his resignation from TY Lin International in 1992, he founded the Lin Tung-Yen China Company in California. His most famous projects had their birth at TY Lin International, and include the Puente Rio Colorado, an

Matches

- Descriptive Summary
 - Title
 - Collection number
 - Creator
 - Extent
 - Repository
 - Abstract
- Administrative Information
 - Access
 - Publication Rights
 - Preferred Citation
 - Provenance
- Biography
- Scope and Content of Collection
- Collection Contents 1
 - PERSONAL, 1937-1998
 - WRITINGS, 1932-1997
 - PROFESSIONAL, 1957-1998
 - + T.Y. LIN INTERNATIONAL, 1957-1998

SEARCH THIS GUIDE

railroad bridges

Collection Contents

PERSONAL, 1937-1998

Carton 1

Arranged alphabetically by subject.

The series contains TY Lin's biographical and personal materials from 1937-1998. Materials include awards, various lectures given and symposia participated in, one folder of notes for courses he taught at UC Berkeley interviews written up in several publications, family reunion notes (1996), general and miscellaneous correspondence.

<u>Carton</u>	<u>Folder</u>	<u>Contents</u>
1	1	Activities, 1951-1997, n.d.
1	2	Awards, 1966-1997, n.d.
1	3-5	Biographical and Interviews, 1960-1996
1	6	Chinese Railroad Bridges [photocopy of photograph album], 1937-1938
1	7	Civil Engineering 134 and 144, 1972-1976
1	8	Lin Family Reunion, 1996
1	9	Miscellaneous Correspondence, 1958-1998, n.d.
1	10	Taiwan Bridge Postage Stamps, 1986

WRITINGS, 1932-1997

RLG Cultural Materials

- Members contribute collections
- Collections consist of digital surrogates of original artifacts
- Service offers integrated access across diverse content
- Brings new relationships to light
- Allows for new discoveries
- Integrate primary sources in teaching

RLG Cultural Materials

► **BROWSE** everything

► **SEARCH** for words and/or dates to **GO**

► [Welcome](#) ► [What's Inside](#) ► [How to use it](#)

Where museums, libraries, and archives intersect.

RLG Cultural Materials is the result of an unprecedented collaborative effort from an international alliance of RLG member institutions, bringing together primary source materials in high-quality digital form. It is a unique, dynamic resource for discovery and scholarship, providing access to authenticated, rights-cleared digital materials through an advanced and easy-to-use web interface. This resource continues to expand and increase in value for the exploration of collections of material culture, vital to contemporary scholarship.



[Credits](#)

NEW COLLECTIONS



American Environmental Photographs, 1891-1936: Images from the University of Chicago Library
University of Chicago



David A. Hanson Collection of the History of Photomechanical Reproduction
Sterling & Francine Clark Art Institute



William H. Helfand Collection of Pharmaceutical Trade Cards
The New York Academy of Medicine



William Allen Collection
American Antiquarian Society

GETTING STARTED

There are many ways to explore RLG Cultural Materials. Enter words and dates into the search boxes at the

RLG Cultural Materials

[FEEDBACK](#) [HELP](#) [HOME](#) [SIGN OUT](#)



► **BROWSE** everything ► **SEARCH** for words and/or dates to in everything in my result **GO**

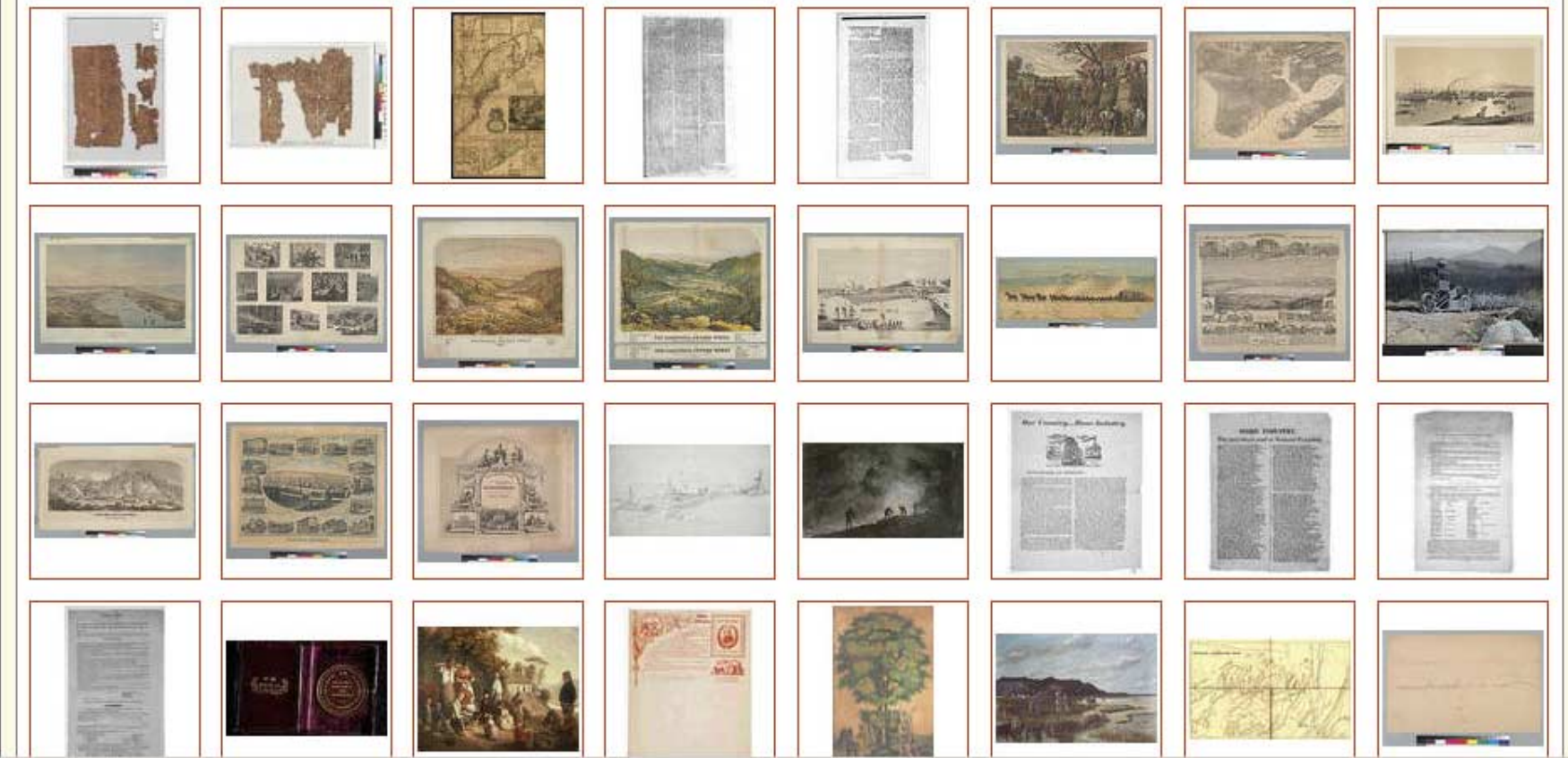
4865 [keyword] industry

(4852 works and 13 collection records)

[list](#) [details](#) [thumbnails](#) [result overview](#)

previous searches

◀ prev next ▶ showing 1 to 80 of 4865 sort by: [Relevance](#) [Creator](#) [Date](#) [Contributor](#)





1997.: Robert Deane, Packing control samples. Mountain Maid Pty. Ltd., Batlow, New South Wales.. National Library of Australia.

[BROWSE](#) everything

SEARCH for words and/or dates to in everything in my result

4865 [keyword] industry





(4852 works and 13 collection records)

previous searches

◀ prev 14 ▶ next ▶

showing 1 to 20 of 4865

sort by: **Relevance** [Creator](#) [Date](#) [Contributor](#)

	Creator	Title	Date	Work Type	Collection	Contributor
	1 Sievers, Wolfgang	Automotive parts industry, Colonial Gas Company, Melbourne, 1967 (P1495/5)	1957-1971.	photographs 1 of 12 photographs	National Library of Australia - Digitised images from the Pictorial Collection	National Library of Australia
	2 Geo. R. Lawrence Co.	Chicago Commercial Assn. Banquet, Oct. 7th, 1905	1905 October 7	photographs ; portraits 1 photographic print; Group portraits; Portrait photographs; Gelatin silver prints; Banquet camera photographs	Panoramic Photographs - 1851-1991	Library of Congress
	3 Chicago Daily News, Inc.	[Parade of women and children marching along a street lined with spectators during the 1904 ...	[between 1904 June-Sept.]	photographs Dry plate negatives; Gelatin dry plate negatives	Chicago Daily News negatives collection	Chicago Historical Society
	4 Geo. R. Lawrence	Chicago Assn. of Commerce, October 7, '08	1908 October 7	photographs ; portraits 1 photographic print; Portrait	Panoramic Photographs - 1851-	Library of Congress



BROWSE everything

SEARCH for words and/or dates to in everything in my result

GO

4865 [keyword] industry

(4852 works and 13 collection records)

list



details



thumbnails



result over view



previous searches



Search or browse the people, places and things mentioned in your results.

WHAT ?types of works

search work types:

 go

browse:

 by hit count alphabetically

- 4460 [photographs](#)
- 136 [catalogs](#)
- 85 [manuals](#)
- 61 [prints](#)
- 42 [portraits](#)
- 34 [drawings](#)
- 23 [cityscapes](#)
- 22 [posters](#)
- 18 [periodicals](#)
- 15 [bird's-eye views](#)
- 13 [works of art](#)
- 12 [broadsides](#)
- 12 [company materials](#)
- 12 [pamphlets](#)

WHERE ?places depicted in works

search depicted places:

 go

browse:

 by hit count alphabetically

- 928 [unspecified](#)
- 358 [Gary \(Ind.\)](#)
- 358 [Indiana](#)
- 299 [United States -- District of Columbia -- Washington \(D.C.\)](#)
- 287 [United States -- New Jersey -- Nutley](#)
- 255 [United States -- New York \(State\) -- New York](#)
- 233 [Australia](#)
- 224 [United States -- California](#)
- 154 [United States -- Washington Region](#)
- 144 [Chicago \(Ill.\)](#)
- 119 [United States -- Ohio -- Barberton](#)

WHO ?contributors of works

search contributors:

 go

browse:

 by hit count alphabetically

- 2673 [Library of Congress](#)
- 978 [Bancroft Library, University of California, Berkeley](#)
- 398 [National Library of Australia](#)
- 360 [Indiana University](#)
- 240 [Smithsonian Institution](#)
- 144 [Chicago Historical Society](#)
- 19 [University of Chicago](#)
- 12 [National Library of Wales](#)
- 10 [London School of Economics](#)
- 9 [International Institute of Social History](#)
- 7 [Huntington Library, Art Collections, and Botanical Gardens](#)
- 5 [Sterling and Francine Clark Art Institute](#)

Who uses

- Manuscripts and other primary source documents?
- Photographs, prints and other visual resources?

DLF/Outsell Survey

- Which of the following information types do you use for

Research?

Teaching?

Coursework?

Amy Friedlander, "Dimensions and Use of the Scholarly Information Environment: Introduction to a Data Set Assembled by the Digital Library Federation and Outsell, Inc.," November 2002. <<http://www.clir.org/pubs/abstract/pub110abst.html>>

Primary Source Use

	Research	Teaching	Coursework
Faculty	82.8%	57.6%	0
Graduate	79.2%	56.2%	60.7%
Undergrad	0	0	66.8%

Tables 68-70

Primary Source Use

	Research	Teaching	Coursework
Faculty	82.8%	57.6%	0
Graduate	79.2%	56.2%	60.7%
Undergrad	0	0	66.8%

Tables 68-70

Visual Resources Use

	Research	Teaching	Coursework
Faculty	46.8%	62.2%	0
Graduate	50.7%	64.6%	47.5%
Undergrad	0	0	69.6%

Tables 68-70

Visual Resources Use

	Research	Teaching	Coursework
Faculty	46.8%	62.2%	0
Graduate	50.7%	64.6%	47.5%
Undergrad	0	0	69.6%

Tables 68-70

Attitudinal Interviews

- Archival Resources (Primary Resources)
 - Faculty – Research
 - Undergrad – Coursework
- Cultural Materials (Visual Resources)
 - Faculty – Teaching

Primary Sources – early findings

- Faculty:
 - Existence of guides
 - Content/Scope wins
 - Value exhaustiveness
 - Worry about gaps
 - Graduates share values

Primary Sources – early findings

- Undergrads:
 - Growing user base
 - Assignment driven
 - Value biographical and historical information
 - Will use nearby collections
 - Worry about time

Visual Resources

- Faculty Interviews re Teaching
 - Current Strategies for
 - Gathering images
 - Managing images
 - Teaching with images
 - What would an ideal future look like?

Visual Resources - early findings

- Faculty don't use licensed resources
- Faculty find or create their own images
- Faculty gather images to build their own resources
- Faculty use PowerPoint & Web pages
- Faculty would like it all

Image Destinations – early findings

- Immediate re-use
 - Faculty harvest images for PowerPoint
- Re-aggregation
 - Faculty harvest images
 - for their own archive
 - for departmental image pool
 - Campus harvests images
 - for dedicated instructional images database
 - for their digital library

Visual Resources - first conclusions

- Integration and disintegration are important
- Content acquisition is important
 - Descriptive metadata and image
 - Details, individual images, entire collections
 - Easy to drop into a presentation
 - Easy to ingest into local databases / tools

Common-Sense Ethnography

- They value their time
- They change their values



